

## EIPIC INFORMATION PACK

Your child’s doctor has discussed your child’s needs with you, and has initiated a referral for your child’s enrolment in the Early Intervention Programme for Infants and Children (EIPIC).

To guide you through this initial phase where you may have many questions on EIPIC, we have put together some useful materials in this information pack.

The information pack contains the following sections:

	<b>Contents</b>	<b>Page Number</b>
1.	Early Intervention: A Quick Overview	2
2.	EIPIC Referral Process	3
3.	What to Expect at EIPIC	4
4.	Choosing an EIPIC Centre	5
5.	List of EIPIC Centres	6-7
6.	Contact Details & Available Resources	8

-----

## Early Intervention: A Quick Overview

### WHAT IS EARLY INTERVENTION?

Early Intervention (EI) refers to services provided to infants and young children with developmental delays or disabilities.

EI seeks to maximise the development of the child through various intervention approaches, targeting the child's developmental areas such as motor skills, cognitive skills, psychological skills, speech and language, and activities of daily living.

EI can come in various forms. It may be facilitated by a team of professionals or an individual professional, held at an intervention centre or in the child's natural environment (e.g. home, preschool), and conducted in a group or 1-to-1 basis.

The early years in a child's life represent the most critical period of his/her development.

### IS EARLY INTERVENTION IMPORTANT?

Research has shown that the provision of intervention as early as possible will maximise the developmental potential of a child with developmental delay or disabilities.

### HOW DO I KNOW IF MY CHILD REQUIRES EARLY INTERVENTION?

Your child's doctor would have advised you on the need for early intervention.

If your child has yet to be seen by a doctor, you may visit any polyclinic to get a referral to either KK Women's and Children's Hospital (Department of Child Development), or National University Hospital (Child Development Unit). The medical team there will carry out required assessments and advise you accordingly thereafter.

Alternatively, you could approach a private paediatrician directly for consultation and assessment.

Your child's doctor will make recommendations based on their assessment. You may enrol your child in a:

### WHERE CAN MY CHILD GO FOR EARLY INTERVENTION?

- Government-subsidised EI centre run by a Social Service Agency (SSA), for the Early Intervention Programme for Infants and Children (EIPIC)<sup>1</sup>, which is a holistic group-based intervention
- SSA-run therapy centre, for therapy in specific disciplines
- Private intervention service provider, for all types of intervention (subject to availability)
- Hospital-based therapy services

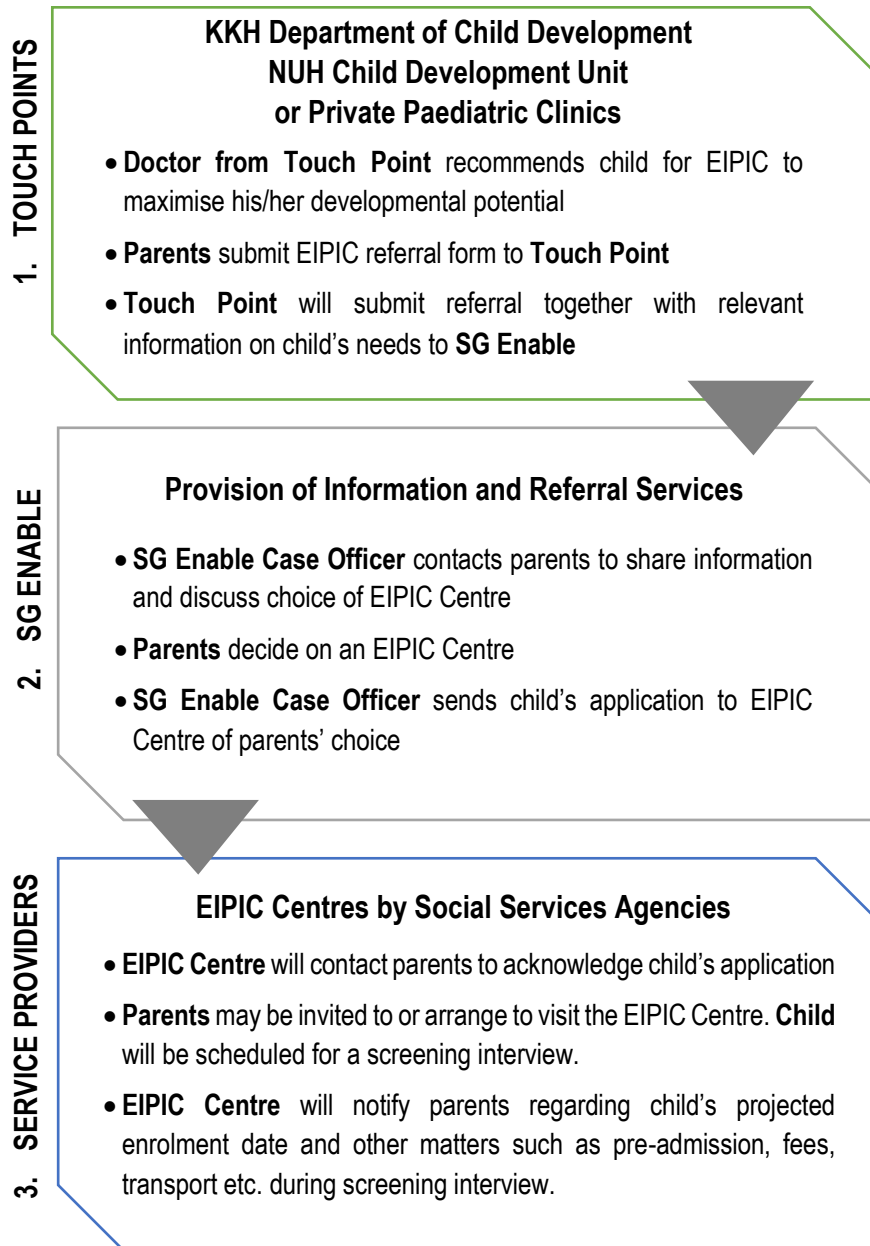
### HOW CAN I PARTICIPATE IN MY CHILD'S EARLY INTERVENTION?

Early Intervention (EI) Centres commonly offer training to equip parents with the necessary skills and knowledge to better support the child.

For a more successful intervention outcome, you are encouraged to work actively with the Early Intervention Centre to actively practice what the child has been taught during EI sessions, in his/her home environment.

<sup>1</sup>Enrolment in EIPIC is by hospital referral. A diagnosis is not required for enrolment into EIPIC.

## EIPIC Referral Process



**Note:**

If your child is a **Permanent Resident (PR)**, you will be required to submit the following additional documents:

- a) Child's birth certificate;
- b) Child's re-entry permit; and
- c) Parents' NRICs.

## What to Expect at EIPIC

### WHAT IS EIPIC?

EIPIC is a group-based intervention programme focused on your child's developmental needs. It is designed for preschool children (up to 6 years old), to better prepare them for mainstream primary or special education school.

At the EIPIC centre a team of professionals comprising teachers, therapists and psychologists will work with your child according to his/her needs, in areas concerning:

- Speech, language and communication skills
- Social skills
- Cognitive learning
- Motor skills
- Daily living skills

It must be noted that EIPIC is not a replacement for preschool. Parents are encouraged to enroll their children in preschool and EIPIC concurrently.

### TYPICAL STRUCTURE ADOPTED BY EIPIC CENTRES

A typical EIPIC centre follows the normal school term and operates during office hours, on weekdays.

Class size can range from 1 to 8 children, with children placed in classes based on their needs. This ensures focused intervention can take place during EIPIC sessions, where children in the same class have the same areas of needs.

Each child will attend sessions amounting from 2 to 12 hours a week, depending on the EIPIC centre's assessment of child's needs. You may discuss this further with your chosen EIPIC centre, during the screening interview.

### INDIVIDUAL EDUCATION PLAN

Once EIPIC teachers and therapists have had a chance to work with your child during the first few weeks of EIPIC, an Individual Education Plan (IEP) will be developed.

The IEP sets out measurable/observable goals for your child, and also monitors your child's progress for each goal. An IEP is typically reviewed by your child's EIPIC teachers every semester (every 6 months).

You may find out more about how your chosen EIPIC centre develops and implements an IEP, during your screening interview with the EIPIC centre.

## Choosing An EIPIIC Centre

“A Guide to the Early Intervention Programme for Infants and Children” is designed to help you in your selection of a suitable EIPIIC centre. It is important to consider the following when making your decision:

<b>LOCATION</b>	Is the centre located near your home and your child’s preschool?
<b>ESTIMATED WAIT TIME</b>	Wait time varies from centre to centre, based on current capacity and resources
<b>CAREGIVER’S PRESENCE</b>	Some centres may require an adult caregiver’s presence during sessions
<b>TRANSPORT SERVICES</b>	Some centres offer optional transport services, subject to charges and availability

A fee matrix is also available, which shows you the fees charged by all EIPIIC centres.

You may access the Guide and fee matrix via SG Enable’s website (<https://www.sgenable.sg>), or by scanning the QR codes below:

<p>“A Guide to The Early Intervention Programme for Infants And Children”:</p> 	<p><b>EIPIIC Fee Matrix:</b></p> <div style="display: flex; justify-content: space-around;">   </div> <div style="display: flex; justify-content: space-around; margin-top: 5px;"> <span>Singapore Citizens</span> <span>Permanent Residents</span> </div>
---	--

### The Guide helps you in your selection by:

- Allowing you to identify EIPIIC centres within your preferred region and giving you a comparison of EIPIIC centres across the four important factors listed above.



#### General information about EI Centres

	<b>WEST</b>		
<i>Name of Centre</i>	<b>ECC Clementi</b>	<b>Fei Yue Jurong</b>	<b>SPD Jurong</b>
<b>AAS Edén Children’s Centre (Clementi)</b>	AAS Edén Children’s Centre (Clementi)	Fei Yue EIPIIC @ Jurong East	SPD Building Bridges EIPIIC Centre @ Jurong
<b>Nearest MRT / LRT</b>	Clementi (EW23)	Jurong East (NS1 / EW24)	Chinese Garden (EW25)
<b>Estimated Wait Time ^</b>	6 – 9 months	9 – 12 months	12 months
<b>Caregiver’s Presence *</b>	Yes (Only for the first 6 months)	Yes (For selected children only)	Yes (For selected children only)
<b>Transport Services *</b>	No	Yes (selected areas only)	No

Additional information: [Click here for Page 5](#) [Click here for Page 8](#) [Click here for Page 33](#)

- Providing you with detailed information on each EIPIIC centre, including contact information, service group(s) and indicative frequency of sessions.



#### Autism Association (Singapore) (AAS)

##### Eden Children’s Centre (Clementi)

<b>AGE</b>	2 to 6	<b>STAFF TO STUDENT RATIO</b>	1:1 to 1:3
<b>SERVICE GROUP</b>	Autism Spectrum Disorder (ASD) and related only	<b>PROFESSIONAL STAFF / SERVICES</b>	Occupational Therapist, Speech Therapist, Social Worker, Caregiver training & support
<b>CAREGIVER’S PRESENCE</b>	Compulsory for 1 <sup>st</sup> 6 months		
<b>PROGRAMME DETAILS*</b>			
<b>EIPIIC @ Centre</b>			
Mon & Tue	2 days x 3 hours	9:00 am – 12:00 pm	1:30 pm – 4:30 pm
Wed, Thu & Fri	3 days x 2 hours	9:00 am – 11:00 am	11:30 am – 1:30 pm

\*Intervention schedule preferences can be raised but final decision would still be with centre after assessing child



Bldg 214 Clementi Ave 4, #01-082, 5600214  
By MRT: Clementi  
By Bus: 286, 667  
Centre Transport/ Boundaries: NA  
Contact Person:  
Ms. Tutte Noorshah Bte Alui  
[tutte@autism.org.sg](mailto:tutte@autism.org.sg)  
Tel: 6772 6930  
Fax: 6773 6853

## List of EIPIC Centres (1/2)

Area	Nearest MRT / LRT	EIPIC Centre	Address
East	Pasir Ris	Cerebral Palsy Alliance of Singapore (CPAS)	<ul style="list-style-type: none"> <li>65 Pasir Ris Dr 1 S(519529)</li> <li>Blk 630 Pasir Ris Drive 3, #01-364 S(510630)</li> </ul>
	Tampines	SPD Building Bridges EIPIC Centre	Blk 866, Tampines St 83, #01-237, S(520866)
		THK EIPIC Centre @ Tampines	Blk 424, Tampines St 41, #01-188, S(520424)
	Bedok	SPD Building Bridges EIPIC Centre	Blk 522, Bedok North Ave 1, S(460522)
North East	Ang Mo Kio	THK EIPIC Centre@ Ang Mo Kio	Blk 313, Ang Mo Kio Ave 3, #01-2322 S(560313)
		Autism Resource Centre <i>(only for children with suspected/confirmed diagnosis of Autism)</i>	5 Ang Mo Kio Ave 10, S(569739)
	Marymount	Fei Yue EIPIC Centre (Upper Thomson)	600 Upper Thomson, Blk D, S(574421)
	Hougang	AWWA Early Intervention Centre (Hougang)	<ul style="list-style-type: none"> <li>11, Lorong Napiri, S(547532)</li> <li>Blk 660/661, Hougang Ave 8, S(530660)</li> </ul>
	Seng Kang — Layer LRT	AWWA Early Intervention Centre (Fernvale)	No. 47 Fernvale Link S(797537) <i>Next to Blk 431A Fernvale Link</i>
	Punggol	Metta Welfare Association	Blk 194, Punggol Road, #01-01, S(820194)

## List of EIPIC Centres (2/2)

Area	Nearest MRT / LRT	EIPIC Centre	Address
North	Sembawang	Fei Yue EIPIC Centre (Wellington Circle)	Blk 508, Wellington Circle, S(750508)
	Khatib	Rainbow Centre – Yishun Park	15, Yishun St 61, S(768548)
	Admiralty	THK EIPIC Centre @ Woodlands	Blk 716, Woodlands Dr 70, #01-124, S(730716)
West	Clementi	Autism Association Singapore (AAS) - Eden Children Centre (Clementi) <i>(only for children with suspected/confirmed diagnosis of Autism)</i>	Blk 374, Clementi Ave 4, #01-182, S(120374)
	Jurong East	Fei Yue EIPIC Centre (Jurong East)	Blk 101, Jurong East St 13, #01-188, S(600101)
	Chinese Garden	SPD Building Bridges EIPIC Centre	Blk 337, Jurong East Ave 1, #01-1562, S(600337)
	Yew Tee	THK EIPIC Centre @ Choa Chu Kang	Blk 606, Choa Chu Kang St 62, #01-139, S(680606)
Central	Toa Payoh	AWWA Early Intervention Centre (Kim Keat)	Blk 195, Kim Keat Ave, S(310195)
	Queenstown	Rainbow Centre - Margaret Drive	501, Margaret Drive, S(149306)
	Tiong Bahru	SPD Building Bridges EIPIC Centre	2, Peng Nguan Street, SPD Ability Centre, S(168955)
	Macpherson	Canossian School <i>(only for children with hearing impairment)</i>	1, Sallim Road, S(387621)

## Contact Details & Available Resources

### SG Enable

#### General Information:

You may contact SG Enable or visit our website to find out more about the services available for you and your child.

#### EIPIC Referral:

Your assigned case officer will contact you within 10 working days of receiving your complete EIPIC referral form from the hospital or private paediatrician. For queries on your EIPIC referral, you may follow up with your assigned case officer.



**1800 858 5885** (9.00am to 5.30pm, Mondays to Fridays)



<https://www.sgenable.sg>



SG Enable's opening hours are 9.00am to 5.30pm, Mondays to Fridays.  
(Closed on Saturdays, Sundays, and Public Holidays)

### Enabling Guide

For more information on early intervention and EIPIC, visit Enabling Guide, a first-stop resource portal for caregivers.



<https://www.enablingguide.sg/>

